



A skeleton designed for ultimate performance:
Angelus U40 Racing Tourbillon Skeleton

As part of its return to the forefront of cutting-edge Swiss watchmaking, ANGELUS is proud to announce the launch of the latest addition to its Urban Collection. The U40 Racing Tourbillon Skeleton is powered by the A-300 in-house tourbillon movement, which was developed from the bottom up to enhance its three-dimensionality and sculptural beauty while boosting its performance and shock-resistance.



U40 Racing Tourbillon Skeleton

Manufacture Angelus A-300 tourbillon calibre: one-minute flying tourbillon, skeletonized, hand-wound.

Case: grade 5 titanium, box sapphire crystal, diameter 42 mm, thickness 10 mm

© ANGELUS SA



When the Angelus engineers set out to develop, design and manufacture the U40 Racing Tourbillon Skeleton, they went way beyond the confines of traditional watchmaking and took their cue from cutting-edge architecture and high-performance structural engineering, some of the world's greatest supercars and aerospace-inspired technology. The result of their labours, which involved four years of intensive R&D, is the Angelus Tourbillon Skeleton A-300 calibre.

Designed to be unique

Unlike most conventional skeletonized watches, which tend to be cut-out versions of existing models, the U40 was designed to be a skeleton from the start and is based on structural optimization. As Angelus Head of Innovation Sébastien Chaulmontet explains: "When you're designing a watch as unusual as this one, it's vital that you're conscious from the start of all the points you need to take into consideration. In this case, one of the main challenges was to achieve the rigidity necessary when the skeletonized mechanism is intrinsically so flimsy."



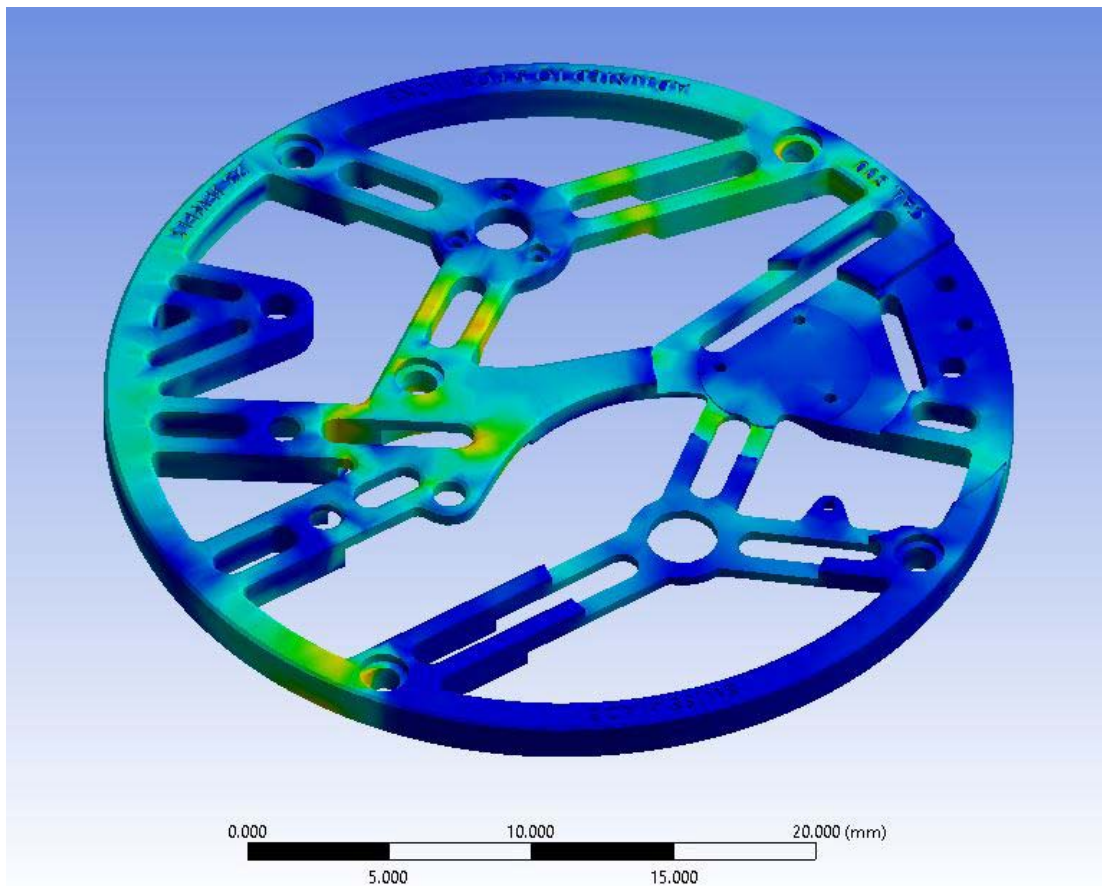
Manufacture Angelus A-300 calibre
Tourbillon movement with optimized beam-type bridges
and Angelus six-spoke design wheels for maximum stiffness and weight saving
© ANGELUS SA

The U40's simplicity and elegance are set off to maximum advantage by a movement that has the appeal of a three-dimensional sculpture and is a celebration of consummate mechanical achievement. Much reduced in weight, it has maximum rigidity from its beam-type bridges and the fact that all the movement's main elements, such as the wheels and barrel, are firmly secured between two plates. This design replaces the conventional main plate and bridges construction and massively increases the mechanical resistance of the movement. The watch's rigidity is further enhanced by the Angelus in-house six-spoke design, which reinforces the wheel train and protects the skeletonized ratchet and barrel.



With its core functions – hours, minutes and one-minute flying tourbillon – the A-300 calibre has 23 jewels, a Swiss lever escapement and measures just 4.3 millimetres in thickness and 32.8 millimetres in diameter. The 4 Hz / 28,800 vph frequency is a guarantee for high performance and precision.

The ultra-slim movement has painstakingly executed contemporary haute horlogerie finishing with snailed black ADLC coating and chamfered edges. The design is enhanced by a skeletonized ratchet and barrel in the exclusive Angelus six-spoke design.



A-300 Calibre beam-type bridges
It has maximum rigidity from its beam-type bridges
© ANGELUS SA

Avant-garde inside and out

The U40 Racing Tourbillon Skeleton is housed in a fabulous grade 5 titanium case that measures 42 millimetres in diameter and is only 10 millimetres thick. The design is highly complex and features a variety of curves and lines combined with alternating polished and satin-finished surfaces and a see-through back. Viewed from the side, the housing is stepped and tapers from top to bottom, the widest section accommodating the extra-large glass with the lower part narrowing to fit snugly on the wrist. The lugs are hollowed out to further increase lightness.



Encompassing the dial is a multi-step bezel in black, dark grey and light grey with red imprints and a flange with an index and chapter rings. The hour and minute hands have red or white tips.

This impressive timepiece is secured to the wearer's wrist by a black rubber strap bearing a three-dimensional motif and Angelus logo and fastened by a titanium pin buckle.



OTSAT.B01A.K007T red hands



OTSAT.B01B.K007T white hands

U40 Racing Tourbillon Skeleton

Manufacture Angelus A-300 tourbillon calibre: one-minute flying tourbillon, skeletonized, hand-wound.

Case: grade 5 titanium, box sapphire crystal, diameter 42 mm, thickness 10 mm

© ANGELUS SA



U40 Racing Tourbillon Skeleton Technical Specifications

Features and Indications

Central hours and minutes, one-minute flying tourbillon

Movement and Finishing

Calibre:	A-300, mechanical hand-winding tourbillon movement
Complications:	One-minute flying tourbillon
Jewels:	23
Diameter:	32.8 mm
Height:	4.30 mm
Power reserve:	60 hours
Frequency:	4 Hz / 28,800 vph
Balance wheel:	Black, gold-treated
Escapement:	Swiss lever
Regulated:	Set to 5 positions
Gear train:	Wheels with exclusive Angelus six-spoke design to maximize rigidity
Main plate:	Snailed with chamfered edges, black ADLC coated
Upper bridges:	Snailed with chamfered edges, black ADLC coated
Tourbillon cage:	Mirror-polished with chamfered and polished edges

Dial

Chapter ring:	Multi-step with indexes treated in black and dark grey with white and red prints
Hands:	Skeletonized, polished facet and sandblasted with coloured tip central hour and minute hands

Case

Material:	Grade 5 titanium with black coating on the case band
Diameter:	42 mm
Thickness:	10 mm
Crown:	Engraved with ANGELUS logo, 2 positions: 1 winding, 2 time setting
Back:	Sapphire
Distance between lugs:	21 mm
Water resistance:	30 m / 100 ft / 3 atm
Crystal:	Box sapphire crystal with anti-reflective coating

Strap and buckle

Material:	Black rubber, with 3D motif, Angelus logo and titanium pin buckle
Length range:	120/75 mm
Width:	21/18 mm
Buckle:	Titanium pin-buckle

Reference number

Reference number:	OTSAT.B01A.K007T red hands OTSAT.B01B.K007T white hands
-------------------	--



For **high resolution images** please click the link:
www.angelus-watches.com

For more information, please don't hesitate to contact us:

ANGELUS SA

Marketing & Sales

Boulevard des Eplatures 38

2304 La Chaux-de-Fonds

Switzerland

info@angelus-watches.com

www.angelus-watches.com